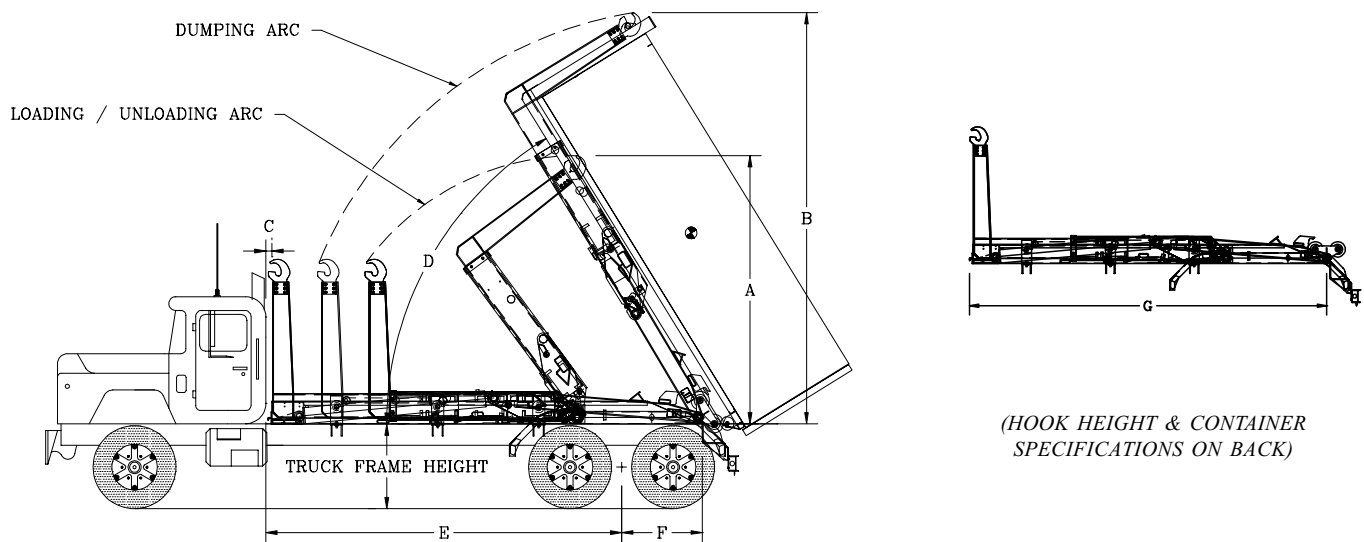


Specifications

U5-HK-176 / U5-HK-200 / U6-HK-176 / U6-HK-200 HOOK HOISTS



(HOOK HEIGHT & CONTAINER
SPECIFICATIONS ON BACK)

HOIST MODELS	U5-HK-176	U5-HK-200	U6-HK-176	U6-HK-200
* (A) MAXIMUM HOOK HEIGHT ABOVE TRUCK FRAME LOADING / UNLOADING	132 5/8"	132 5/8"	132 5/8"	132 5/8"
* (B) MAXIMUM HOOK HEIGHT ABOVE TRUCK FRAME DUMPING	203 5/16"	203 5/16"	203 5/16"	203 5/16"
(C) CAB TO HOIST	3"	3"	3"	3"
(D) RAISED ANGLE	58°	58°	58°	58°
(E) CAB TO AXLE	176"	200"	176"	200"
(F) AFTER FRAME	40"	40"	40"	40"
(G) HOIST LENGTH	213"	237"	213"	237"
(H) HOOK HEIGHT	(SEE BACK PAGE FOR DRAWING & DIMENSIONS)			
RATED CAPACITY	50,000 LBS	50,000 LBS	60,000 LBS	60,000 LBS
LIFT CYLINDERS	7" X 3 1/2" X 81"	7" X 3 1/2" X 81"	7" X 3 1/2" X 81"	7" X 3 1/2" X 81"
JIB CYLINDER	4" X 2 1/2" X 48"	4" X 2 1/2" X 48"	4" X 2 1/2" X 48"	4" X 2 1/2" X 48"
RECOMMENDED CONTAINER LENGTH	16 FT - 20 FT	18 FT - 22 FT	16 FT - 20 FT	18 FT - 22 FT
APPROX. WEIGHT	6,839 LBS	7,483 LBS	7,359 LBS	8,003 LBS

(1) FACTORY TESTED WITH RECOMMENDED CONTAINER LENGTH AND WATER LEVEL LOAD.
(2) WHEN RECOMMENDING CONTAINER LENGTHS; WEIGHT DISTRIBUTION, DUMP ANGLE, AND OVERHANG ARE FACTORS.

* TOTAL MAXIMUM HEIGHT WILL DEPEND ON CONTAINER. CONSULT ENGINEERING FOR CLEARANCE

MODEL U5-HK-176 / U5-HK-200 / U6-HK-176 / U6-HK-200

CROSS MEMBERS - STRUCTURAL TUBING 62,000 LBS. MIN TENSILE A500 GRADE C

MAIN FRAME - HSLA A572 65,000 LBS. MIN TENSILE

JIB FRAME - A514 T-1 & STRUCTURAL TUBING A500 GRADE C

PIVOT TUBE - A514 T-1 100,000 PSI MINIMUM YIELD

PICKUP HOOK - A514 T-1 100,000 PSI MINIMUM YIELD

LIFT CYLINDER PINS - 2 3/4" SOLID (91,000 LB. TENSILE)

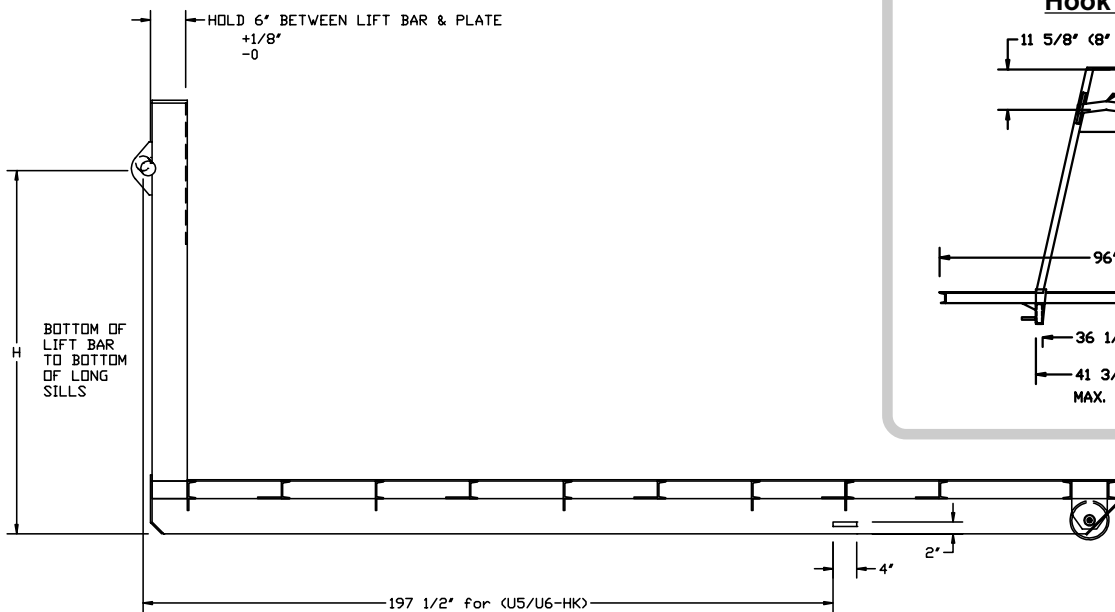
HINGE SHAFT - 2 1/2" SOLID (91,000 LB. TENSILE)

JIB BEARING - 6M POLYMER

PAINTED BLACK

ALL PIVOT JOINTS HAVE HARDENED STEEL BUSHINGS AND GREASE FITTINGS ~ REAR STABILIZER STANDARD ON U6 MODELS ~ OUTBOARD SUPPORTED UPPER LIFT SHAFT ~ MECHANICAL INTERLOCK BETWEEN TAIL AND PIVOT ASSEMBLY ~ OUTSIDE CONTROLS STANDARD ~ STEEL FENDER STANDARD ~ FULL WIDTH BUMPER WITH RECESSED LIGHTS STANDARD ~ RUBBER MOUNTED SEALED LIGHTS STANDARD ~ INSIDE AIR OPERATED CONTROLS STANDARD ~ POLYURETHANE RESERVOIR WITH 10 MICRON AIR BREATHER, 25 MICRON IN TANK RETURN FILTER AND FILLER, SIGHT GAUGE WITH TEMPERATURE GAUGE.

CONTAINER SPECIFICATIONS



HOIST MODELS	U5-HK-176	U5-HK-200	U6-HK-176	U6-HK-200
(H) HOOK HEIGHT	61 3/4"	61 3/4"	61 3/4"	61 3/4"

CYCLE TIMES AT APPROXIMATELY 37.5 GPM

EXTENDING DUMP (58°) - 43 SECONDS
 RETRACTING DUMP - 32 SECONDS

EXTENDING JIB - 4 SECONDS
 RETRACTING JIB - 3 SECONDS

HYDRAULIC SYSTEM

GEAR PUMP 37.5 GPM AT 1500 RPM RATED 4000 PSI DIRECT MOUNT ~ 2 SPOOL (U5 MODELS) 3 SPOOL (U6 MODELS) AIR OPERATED GRAPHITE IMPREGNATED ~ SECTIONAL VALVE WITH MANUAL CONTROLS OUTSIDE ~ 7" X 3 1/2" X 81" PSI LIFTING CYLINDERS WITH BUILT-IN COUNTERBALANCE VALVES ~ 6" X 3" X 4.81" PSI STABILIZER CYLINDER ON U6 MODEL ~ 4" X 2 1/2" X 48" PSI JIB CYLINDER WITH BUILT-IN COUNTERBALANCE VALVE ~ OPERATING PRESSURE - 3500 PSI

MINIMUM TRUCK SPECIFICATIONS

FRONT AXLE: 18,000 LB. (WITH POWER STEERING)

REAR AXLE: 44,000 LB.

36,000 PSI CHASSIS FRAME: MINIMUM SECTION MODULUS = 33.3 IN³

50,000 PSI CHASSIS FRAME OR MORE: MINIMUM SECTION MODULUS = 24 IN³