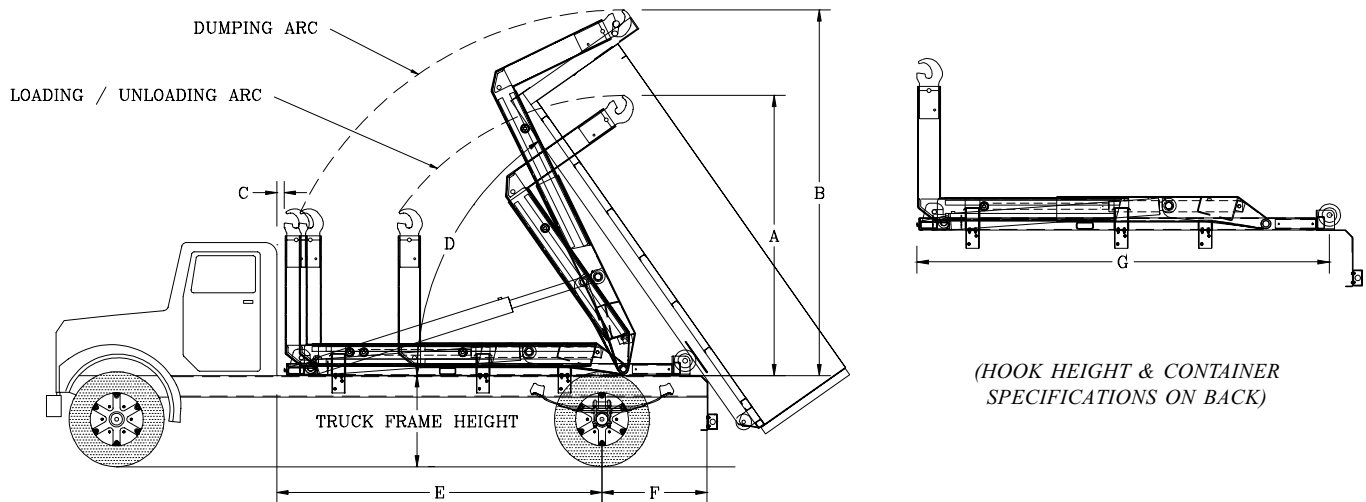


# Specifications

## U30-HK-138 / U30-HK-156 / U30-HK-176 HOOK HOISTS



(HOOK HEIGHT & CONTAINER SPECIFICATIONS ON BACK)

HOIST MODELS	U30-HK-138	U30-HK-156	U30-HK-176
* (A) MAXIMUM HOOK HEIGHT ABOVE TRUCK FRAME LOADING / UNLOADING	119 1/16"	119 1/16"	119 1/16"
* (B) MAXIMUM HOOK HEIGHT ABOVE TRUCK FRAME DUMPING	160 3/4"	160 3/4"	160 3/4"
(C) CAB TO HOIST	3 15/16"	3 15/16"	3 15/16"
(D) RAISED ANGLE	60° (14') - 59° (16') - 46° (18')	57° (16') - 46° (18') - 39° (20')	46° (18') - 39° (20')
(E) CAB TO AXLE	138"	156"	176"
** (F) AFTER FRAME	44 3/4" or 68 3/4"	50 3/4" or 74 3/4"	54 3/4"
** (G) HOIST LENGTH	170 1/8" or 194 1/16"	194 1/8" or 218 1/8"	218 3/16"
(H) HOOK HEIGHT	(SEE BACK PAGE FOR DRAWING & DIMENSIONS)		
RATED CAPACITY	30,000 LBS.	30,000 LBS.	30,000 LBS.
LIFT CYLINDERS	6" X 3 1/2" X 78"	6" X 3 1/2" X 78"	6" X 3 1/2" X 78"
JIB CYLINDER	4" X 2 1/2" X 48"	4" X 2 1/2" X 48"	4" X 2 1/2" X 48"
RECOMMENDED CONTAINER LENGTH	14' - 16' or 16'-18'	16' - 18' or 18' - 20'	18' - 20'
APPROX. WEIGHT	3,768 LBS	3,768 LBS	3,768 LBS

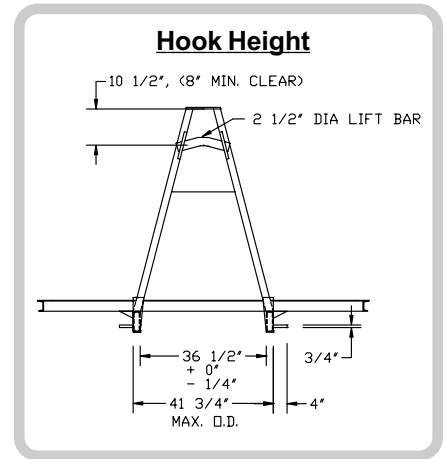
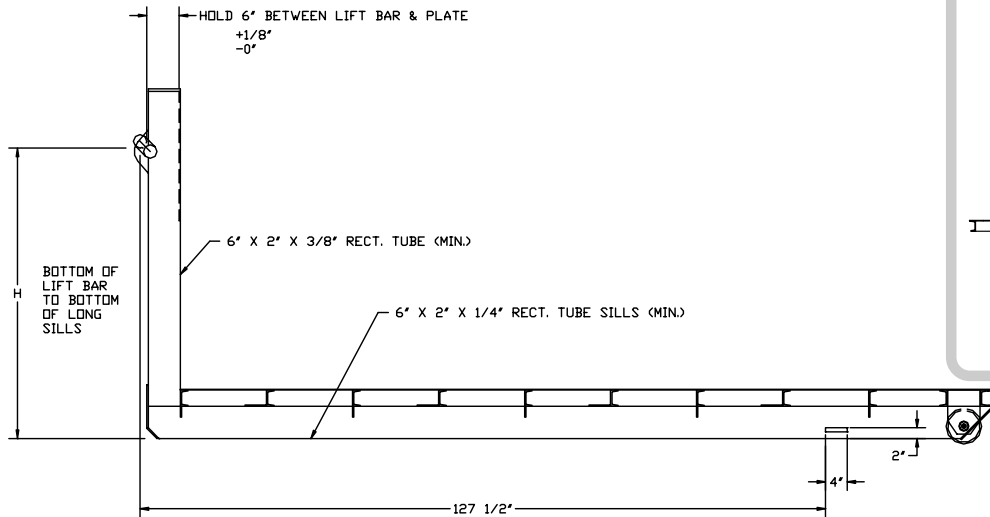
(1) FACTORY TESTED WITH RECOMMENDED CONTAINER LENGTH AND WATER LEVEL LOAD.  
 (2) WHEN RECOMMENDING CONTAINER LENGTHS; WEIGHT DISTRIBUTION, DUMP ANGLE, AND OVERHANG ARE FACTORS.

\* TOTAL MAXIMUM HEIGHT WILL DEPEND ON CONTAINER. CONSULT ENGINEERING FOR CLEARANCE  
 \*\* CONSULT ENGINEERING FOR BEST CONFIGURATION

## MODEL U30-HK-138 / U30-HK-156 / U30-HK-176

- HOIST FRAME** - STRUCTURAL TUBING 62,000 LBS. MIN TENSILE
- JIB FRAME** - A514 T-1 100,000 PSI MINIMUM YIELD
- PIVOT TUBE** - A514 T-1 100,000 PSI MINIMUM YIELD
- PICKUP HOOK** - A514 T-1 100,000 PSI MINIMUM YIELD
- LIFT CYLINDER PINS** - 2 3/4" SOLID
- HINGE SHAFT** - 2 1/2" SOLID WITH OUTBOARD SUPPORTED UPPER LIFT SHAFTS
- REAR HOLD DOWN** - 1" PLATE
- OPERATING PRESSURE** - 3500 PSI
- HYDRAULIC PUMP** - GEAR TYPE - 37.5 G.P.M. - 1500 RPM
- HYDRAULIC VALVE** - 2 SPOOL SECTIONAL VALVE WITH SAFETY BY-PASS
- OIL RESERVOIR** - 45 GALLON WITH 10 MICRON AIR BREATHER  
25 MICRON IN TANK RETURN FILTER
- WORKING POINTS** - GREASEABLE

### CONTAINER SPECIFICATIONS



HOIST MODELS	U30-HK-138	U30-HK-156	U30-HK-176
(H) HOOK HEIGHT	Adjustable to 54" or 61 3/4"	Adjustable to 54" or 61 3/4"	Adjustable to 54" or 61 3/4"

### CYCLE TIMES AT APPROXIMATELY 37.5 GPM

- |                              |                             |
|------------------------------|-----------------------------|
| EXTENDING DUMP - 31 SECONDS  | EXTENDING JIB - 4 SECONDS   |
| RETRACTING DUMP - 20 SECONDS | RETRACTING JIB - 31 SECONDS |

THE GALBREATH 30,000 LB. HOOK HOIST WILL ACCOMMODATE EITHER A  
138" OR 156" OR 176" CA CHASSIS.

### MINIMUM TRUCK SPECIFICATIONS

- FRONT AXLE:** 12,000 LB. (WITH POWER STEERING)
- REAR AXLE:** 20,000 LB.
- 36,000 PSI CHASSIS FRAME:** MINIMUM SECTION MODULUS = 24.3 IN<sup>3</sup>
- 50,000 PSI CHASSIS FRAME OR MORE:** MINIMUM SECTION MODULUS = 17.5 IN<sup>3</sup>