

MODEL: A-250 ROLL-OFF TRAILER

Description: The "250" has been the most popular roll-off trailer ever produced. All "250" models are of the reeving cylinder type and are designed to accept a third axle to increase load capacity. The "250" king pin to bogie trailer is still short enough to offer excellent inner city maneuverability. The use that the "250" has received in the last thirty years, has proven its reputed durability in the market place.

The "250" is still popular in markets especially scrap, hazardous waste, and refuse, but has limited load capacity for some interstate application.

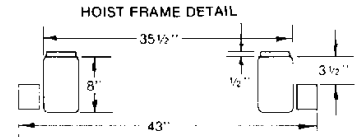
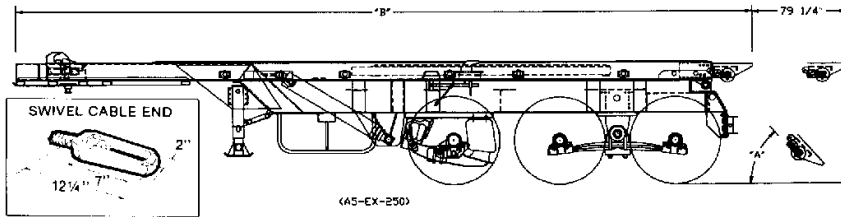
ADVANTAGES:

1. Cylinder reeving winch rated to 60,000#
2. Shortest wheel base to handle up to 30' containers
3. 50 degree dump angle
4. Available in "EX", "HH", "OR", "SIO"
5. Operating pressure of 1850 PSI
6. Over thirty years proven performance (the work horse)
7. Third and Quad capabilities
8. Fenders over tractor tandem standard
9. 58" ground to top of frame

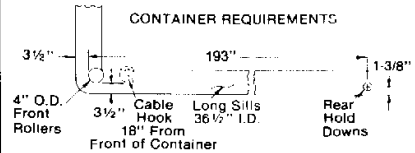
FOUR GREAT STYLES FOR HAU

Extendable Tail Series

Designed for users that require to the ground stability and low loading angle. Units are equipped with a 6-5/8" x 25" rear stabilizing roller and retractable tail which eliminates interference during dumping operations

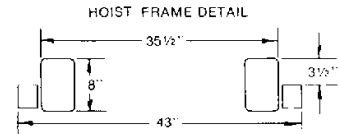
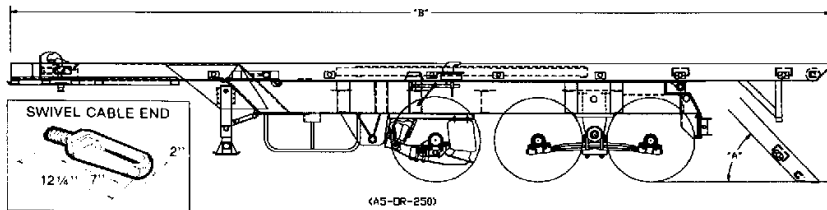


Model	A5-EX-200	A5-EX-250
Approximate Height Above Frame with Hoist in Raised Position	190"	283"
Raised Angle - A	50°	49°
Overall Length - B (Hoist Length)	284 1/4" (262")	337" (304 1/4")
Recommended Container Length Without Using Auxiliary Stops	22ft - 24ft	24ft - 30ft
Approximate Weight	King Pin 4,750 Lbs. Tandem 10,272 Lbs. Total 15,022 Lbs.	King Pin 6,190 Lbs. Tandem 10,392 Lbs. Total 16,582 Lbs.
Approximate Operating Times	Up 40 Sec. Down 23 sec. On 62 Sec. Off 66 Sec. Tail In 10 Sec. Tail Out 5 Sec.	Up 60 Sec. Down 26 Sec. On 75 Sec. Off 79 Sec. Tail In 10 Sec. Tail Out 5 Sec.

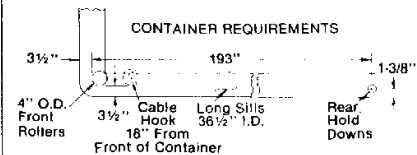


Outside Rail Series

Our most economical hoist to own and operate. Designed to haul a wide variety of outside rail type containers. 6-5/8" x 25" rear roller stabilizes hoist during loading and unloading operations.



Model	A5-OR-200	A5-OR-250
Approximate Height Above Frame with Hoist in Raised Position	188"	283"
Raised Angle - A	50°	49°
Overall Length - B (Hoist Length)	333 3/4" (311")	388" (373 1/4")
Recommended Container Length Without Using Auxiliary Stops	22ft - 24ft	24ft - 30ft
Approximate Weight	King Pin 4,750 Lbs. Tandem 10,330 Lbs. Total 15,080 Lbs.	King Pin 6,190 Lbs. Tandem 10,450 Lbs. Total 16,640 Lbs.
Approximate Operating Times	Up 40 Sec. Down 23 sec. On 62 Sec. Off 66 Sec.	Up 60 Sec. Down 26 Sec. On 75 Sec. Off 79 Sec.



Specifications

Factory Tested - up to 60,000 Lbs.
 Hoist Frame - 8" x 4" x 1/8" A50 Tubing*
 Tail Frame (A5-EX Models Only) - 7" x 3" x 1/2" A50 Tubing
 Operating Pressure - 1850 PSI
 Maximum Operating Pressure - 2000 PSI
 Front Stop - 1 1/2" Plate (1" Plate on A5-HH Models)
 Container Lock - Automatic Spring Load
 Lift Cylinders (200) - 6" - 5" x 79" D.A.T.
 (250) - 6" - 5" - 4" x 118" D.A.T.
 Lift Cylinder Shafts - 2 1/8" Solid
 Winch Cylinders (200) - 7" x 90" D.A.
 (250) - 7" x 108" D.A.
 Tail Cylinder (A5-EX Models Only) 3 1/2" x 80" D.A.
 Cable EXIWRC 7x37 (200) - 1/8" x 78"
 (250) - 7/16" x 91"

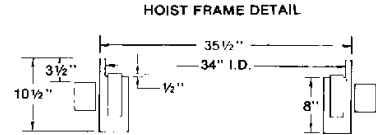
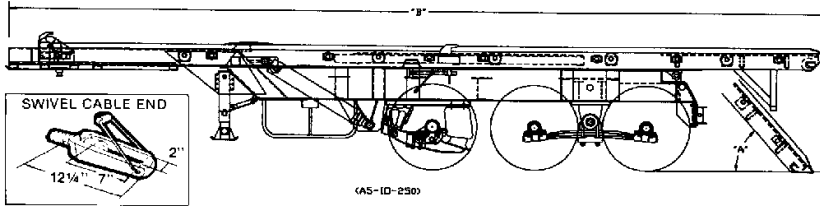
Cable End - Swaged
 Cable Anchor - 4 Cable Clamps
 Cable Travel (200) - 360"
 (250) - 432"
 Cable Sheaves - 10" O.D. with Bronze Bearings
 Hydraulic Valve - 3 Spool/45 GPM with Relief Valve
 Outside Rollers - 4" O.D. with Bronze Bearings
 Inside Rollers (IO Models) - 6" O.D. with
 Bronze Bearings
 Inside Rail (IO Models) - 3/8" Plate
 Stop and Hold Down (IO Models) - 1/2" Plate
 Working Points - Greasable
 Hoist Hinge Pin - 2" Solid

*8" x 4" x 3/8" A50 Tubing on A5-EX Models Only

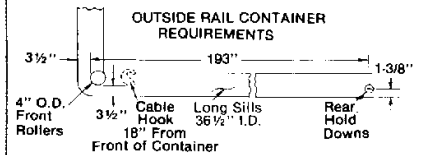
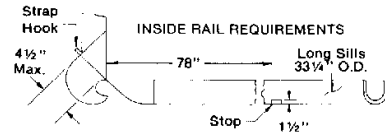
LIFT THOSE HEAVY PAYLOADS!

Inside/Outside Rail Series

Our most versatile hoist available. Units are designed with a 6-5/8" x 25" rear stabilizing roller for hauling bail type, narrow rail containers as well as most outside rail type containers.

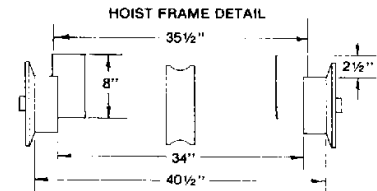
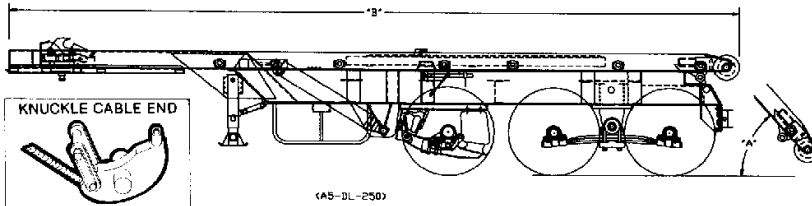


Model	A5-IO-200	A5-IO-250
Approximate Height Above Frame with Hoist in Raised Position	190"	283"
Raised Angle - A	50°	49°
Overall Length - B (Hoist Length)	333 1/4" (311")	388 1/4" (373 1/4")
Recommended Container Length Without Using Auxiliary Stops	22ft - 24ft	24ft - 30ft
Approximate Weight	King Pin 5,000 Lbs. Tandem 10,755 Lbs. Total 15,755 Lbs.	King Pin 6,440 Lbs. Tandem 10,875 Lbs. Total 17,315 Lbs.
Approximate Operating Times	Up 40 Sec. Down 23 sec. On 62 Sec. Off 66 Sec.	Up 60 Sec. Down 28 Sec. On 75 Sec. Off 79 Sec.

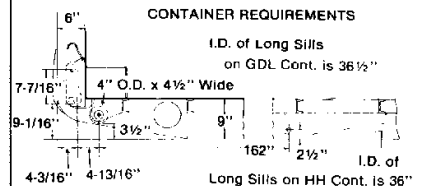


Dead Lift Series GDL Style

Designed specifically for loading containers in areas where overhead clearance is at a minimum. Features include a unique rear hinge that eliminates the need for rear hydraulic stabilizing jack legs, two front and rear container hold downs.

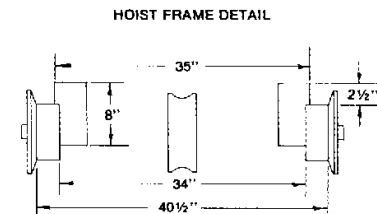
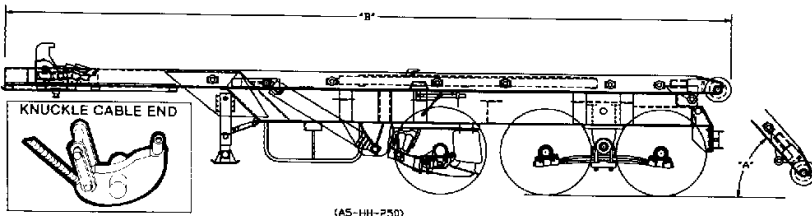


Model	A5-HH-200 & A5-DL-200	A5-HH-250 & A5-DL-250
Approximate Height Above Frame with Hoist in Raised Position	195"	283"
Raised Angle - A	50°	49°
Overall Length - B (Hoist Length)	280 1/4" (258")	334 1/4" (301 1/4")
Recommended Container Length Without Using Auxiliary Stops	22ft - 24ft	24ft - 30ft
Approximate Weight	King Pin 4,750 Lbs. Tandem 9,820 Lbs. Total 14,570 Lbs.	King Pin 6,190 Lbs. Tandem 9,940 Lbs. Total 16,130 Lbs.
Approximate Operating Times	Up 40 Sec. Down 23 sec. On 62 Sec. Off 66 Sec.	Up 60 Sec. Down 26 Sec. On 75 Sec. Off 79 Sec.



Dead Lift Series HH Style

Designed specifically for loading HH style containers in areas where overhead clearance is a minimum. Features include a unique rear hinge that eliminates the need for rear hydraulic stabilizing jack legs, and HH style front and rear container hold downs.



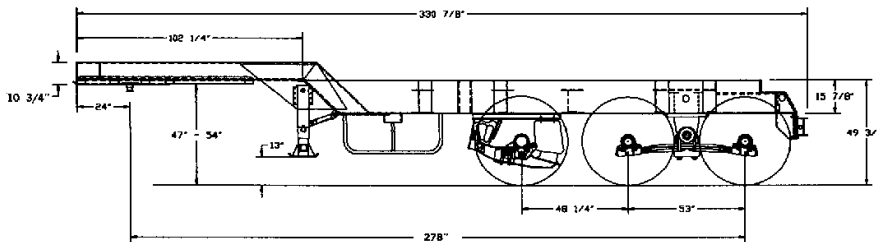
Standard Features

- 50,000 Lb. Capacity, Single Point Spring Suspension
- All Required Lights and Reflectors
- Independent Working Winch Cylinders
- Chrome Plated Cylinder Rods on Double Acting Cylinders
- Tractor Fenders
- Trailer Fenders
- Low Pressure Burst Hose to Protect the Hydraulic System From Back Pressure
- 16" x 36 Lbs. Wide Flange Trailer Frame
- Tire Carrier
- Trailer Brake Control at Hydraulic Valve
- Outside Hydraulic Controls
- Painted Black
- Hoist Props
- Twin Leg, Two-Speed Landing Gear with Sand Pads.
- Hoist Up Alarm

Options

- Fold Down Auxiliary Front Stops for Use with Shorter Containers
- Selector Valve for Front and Rear Auxiliary Hydraulic Power
- V-4 Wisconsin Air Cooled Engine or Ford 4 Cylinder Water Cooled Engine Auxiliary Power Kits
- Air Ride, Air Lift Pusher Axle Installed on 250 Models Only
- Special Tires, Rims, and Wheels
- Trailer Hydraulic Wet Kits Including Pump, Filter, Valve, Pressure and Return Lines and 50 Gallon Oil Reservoir. The Reservoir May Be Installed on Either the Tractor or Trailer. Cable Operated or Air Operated Power Take Offs are Available.
- Backup Alarm • Tool Box • Tarp Box
- Paint Available in Any One of Galbreath's 24 Standard Colors.
- Air Ride Suspension

Trailer Information 250 Shown For Reference



CAUTION! This equipment should be operated by properly trained personnel. Improper use, misuse or lack of maintenance could cause injury to people and/or property. Photos used in this brochure are illustrative only. We reserve the right to make changes at any time without notice. Information contained within this literature is intended to be the most accurate available at time of printing.

Galbreath Incorporated
 461 E. Rosser Drive, P.O. Box 220
 Winamac, Indiana 46996
 800-285-0666 • Fax 219-946-4579

Galbreath Incorporated
 102 Sentry Drive North
 Mansfield, Texas 76063
 800-297-0668 • Fax 817-473-7657

Galbreath Incorporated
 Highway 75 South, Route 1, P.O. Box 160
 Ider, Alabama 35981
 800-964-6478 • Fax 256-657-6147

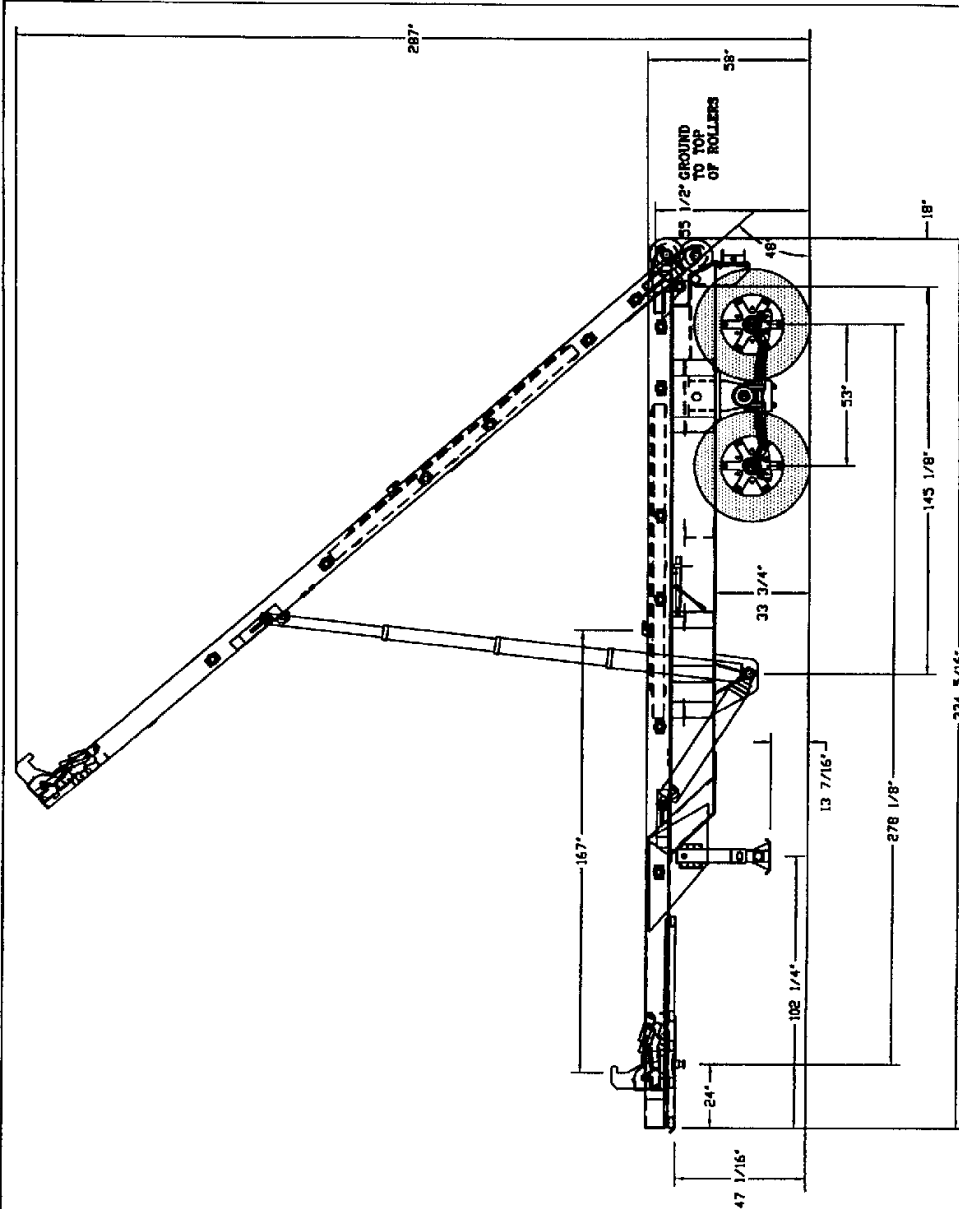
DISTRIBUTED BY



G-05-404



©1999 Galbreath, Inc.



SPECIFICATION CHART

APPROXIMATE WEIGHT: KING PIN - 5,611#
 TANDEN - 6,960#
 TOTAL - 14,601#

APPROXIMATE OPERATING TIMES: HOIST UP - 60 SECONDS
 HOIST DOWN - 58 SECONDS
 CONTAINER ON - 75 SECONDS
 CONTAINER OFF - 79 SECONDS

HOIST CROSS MEMBERS: 8" X 4" X 3/8" GRADE C TUBING

TRAILER CROSS MEMBERS: 10 1/2" X 4" X 3/16" A56 FORMED CHNL.

LIFT CYLINDER: 6" X 6" X 4" X 118" (A3383)
 2 1/2" SOLID SHAFT

WINCH CYLINDER: 3" X 3" X 108" (A3143)
 3" SOLID SHAFT

HOIST HINGE PIN: 2 1/2" C1018 SOLID (64,000# TENSILE)

LIFT CYLINDER PIN: 2 1/2" C1018 SOLID (64,000# TENSILE)

OUTBOARD SUPPORTED UPPER LIFT PIN

WORKING POINTS: GREASABLE

OPERATING PRESSURE: 1,800 PSI

TRAILER BEAMS: A56 32#-16" MILLED I-BEAM

MAIN FRAME TUBE: 8" X 4" X 1/2" ASTM A500 GRADE C TUBING

SUSPENSION: HEAVY AIR-RIDE 25,500 LB. CAPACITY (6901)
 HITCH POINT WITH REMOVABLE HITCH (A1074)
 HUTCH UNDERSLUNG SINGLE POINT (A1074)

HYDRAULIC VALVE: 2 SPOOL/45 GPM WITH RELIEF VALVE

RECOMMENDED CONTAINER LENGTHS: 22'-26'

HOIST SHEAVES: 10" O.D. WITH BRONZE BUSHINGS

HOIST CABLE: 7/8" EXTRC

FACTORY TESTED UP TO 60,000#

RUBBER MOUNTED SEALED LIGHTS STANDARD

OUTSIDE CONTROLS STANDARD

FULL WIDTH BUMPER WITH RECESSED LIGHTS STANDARD

14GA STEEL CONTOUR FENDERS STANDARD

PAINTED STANDARD GALBREATH BLACK

AT LEAST A 50 GALLON HYDRAULIC OIL RESERVOIR IS RECOMMENDED
 (* ALL CYLINDERS HAVE BUILT IN COUNTER-BALANCE VALVES)

© Galbreath, Inc. 2000		REF. 0654190	ISI 907	Def
DO NOT SCALE DRAWING		HOISTS H5		
SCALE 1/40" = 1"		GENERAL SPECIFICATION SHEET		
BY GEORGE		AS-HH-250		
DATE 10/12/00		NO. 18		
EON DATE		NO. IS4654		

THIS DRAWING IS THE EXCLUSIVE PROPERTY OF GALBREATH, INC. ANY REPRODUCTION, ALTERATION, REPLY, OR DISTRIBUTION IS STRICTLY PROHIBITED WITHOUT THE EXPRESS PERMISSION OF GALBREATH, INC.
 COPIES BY ONE OR MORE OF THE FOLLOWING US INTERPS

SPECIFICATION CHART

APPROXIMATE WEIGHT: KING PIN - 6,180/LB
 TANDER - 10,480/LB
 TOTAL - 16,660/LB

APPROXIMATE OPERATING TIMES: HOIST UP - 90 SECONDS
 HOIST DOWN - 98 SECONDS
 CONTAINER ON - 75 SECONDS
 CONTAINER OFF - 78 SECONDS

HOIST CROSS MEMBERS: 6" X 4" X 3/8" GRADE C TUBING

TRAILER CROSS MEMBERS: 10 1/2" X 4" X 5/16" A58 FORKED CHNL.

LIFT CYLINDER: 6" X 6" X 4" X 118" (A5888)
 2 1/2" SOLID SHAFT

WINCH CYLINDER: 7" X 5" X 108" (A5143)
 3" SOLID SHAFT

HOIST HINCE PIN: 2 1/2" CLOS SOLID (64,000 TENSILE)

LIFT CYLINDER PIN: 2 1/2" CLOS SOLID (64,000 TENSILE)

OUTBOARD SUPPORTED UPPER LIFT PIN

WORKING POINTS: CREASABLE

OPERATING PRESSURE: 1,800 PSI

TRAILER BEARS: A58 88 1/2" HOLLOW I-BEAM

MAIN FRAME TUBE: 6" X 4" X 1/2" ASTM A500 GRADE C TUBING

SUSPENSION: HEAVY AIR-RIDE BELLOWS LB. CAPACITY (1900)
 HITCHMOUNT AIR RIDE (A1509)
 HUTCH UNDERSLING SINGLE FOOT (A1074)

HYDRAULIC VALVE: 8 8000/45 GPM WITH RELIEF VALVE

RECOMMENDED CONTAINER LENGTHS: 27'-30'

HOIST BEARS: 10" O.D. WITH BRONZE BUSHINGS

HOIST CABLE: 7/8" 6X19

FACTORY TESTED UP TO 60,000/LB

RUBBER MOUNTED SEALED LIGHTS STANDARD

OUTSIDE CONTROL STAND

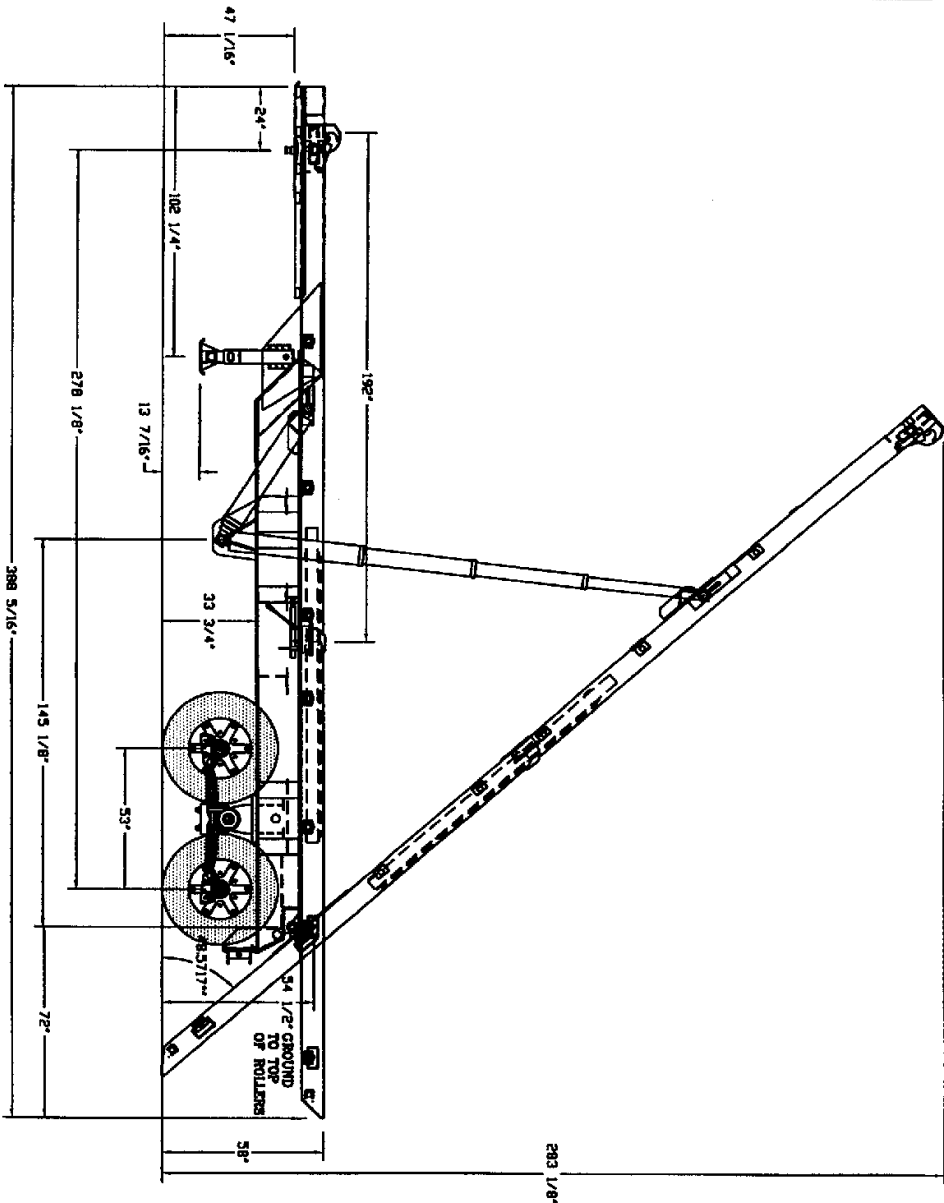
FULL WIDTH BUMPER WITH RECESSED LIGHTS STANDARD

14GA STEEL CONTROL TENDERS STANDARD

PAINTED STANDARD GALVANNEAL BLACK

AT LEAST A 60 GALLON HYDRAULIC OIL RESERVOIR IS RECOMMENDED

(ALL CYLINDERS HAVE BUILT IN COUNTER-BALANCE VALVES)



THIS DRAWING IS THE EXCLUSIVE PROPERTY OF GILBERTH, INC. ANY REPRODUCTION, ALTERATION, REUSE, OR DISTRIBUTION IS STRICTLY PROHIBITED WITHOUT THE EXPRESS PERMISSION OF GILBERTH, INC.		© Gilberth, Inc. 2000		NO. 001180		HOISTS H5		DWG NO. 18	
COVERED BY ONE OR MORE OF THE FOLLOWING US PATENTS		DO NOT SCALE DRAWING		GENERAL SPECIFICATION SHEET		AS-DR-250		REV. 18	
CONTRACT NO.		SCALE 1/40" = 1"		DATE 04/11/97		PROJECT NO.		152756	
JOB NO.		DATE		PROJECT NO.		PROJECT NO.		PROJECT NO.	
JOB NO.		DATE		PROJECT NO.		PROJECT NO.		PROJECT NO.	
JOB NO.		DATE		PROJECT NO.		PROJECT NO.		PROJECT NO.	
JOB NO.		DATE		PROJECT NO.		PROJECT NO.		PROJECT NO.	

Gilberth
 INCORPORATED
 VINAMAC, INDIANA