



GALBREATH INCORPORATED
 Corporate Headquarters
 461 E. Rosser Drive, P.O. Box 220
 Winamac, IN 46996
 Ph: 219-946-6631 Fax: 219-946-4579
 800-285-0666 (Inside USA)

<http://www.galbreath-inc.com>

Mansfield, Texas
 Ph: 817-477-4574
 Fax: 817-473-7657
 800-297-0668 (Inside USA)

Ider, Alabama
 Ph: 256-657-6140
 Fax: 256-657-6147
 800-964-6478 (Inside USA)

Specifications

GP450HDT 4 Cu. Yd. Stationary Compactor

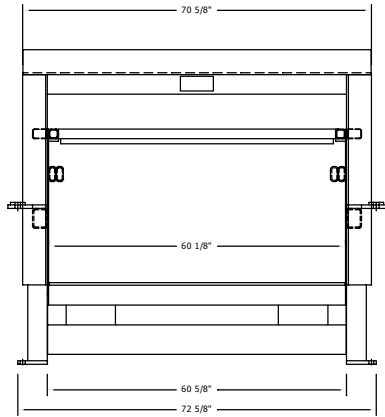
| <i>MODEL NUMBER</i> | | GP450HDT |
|--------------------------|--------------|--------------------|
| WASTECH Rating Size | | 3.26 cu. yd. |
| Clear Top Opening - | Length | 87" |
| | Width | 56" |
| Ram Penetration | | 24" |
| Chamber Length | | 90-1/2" |
| Ram Face - | Height | 28" |
| | Width | 60" |
| Cylinder Stroke | | 116" |
| Cylinder Bore | | 6" (2) |
| Cylinder Rod Diameter | | 4-1/2" |
| Discharge Opening - | Height | 42-1/2" |
| | Width | 61-1/2" |
| Ground Height | | 16" |
| Scale Weight | Approx. | 9,620 lbs. |
| Cycle Time | | 131.1 sec. |
| Pump Size | | 13 GPM |
| Motor Size | | 15 HP |
| Operating Pressure - | Normal | 1950 PSI |
| | Maximum | 2250 PSI |
| Force Rating - | Normal | 65.6/110,200 |
| | Maximum | 75.7/127,200 |
| Chamber Sides | | 3/8" Plate |
| Chamber Floor | | 3/4" AR Plate |
| Ram Top | | 3/8" Plate |
| Ram Sides | | 3/8" Plate |
| Ram Floor | | 3/8" Plate |
| Ram Face | | 3/4" Plate |
| Top Cover | Smooth Plate | 12 Ga. |
| Volume Displacement Rate | | 90 cu. yd. per hr. |

- STANDARD FEATURES**
- Solid State Control System
 - External Power Plant
 - UL & Canadian UL Listed Industrial Control Panel
 - 15 HP, 208/230/460 Volt, 3 Phase Continuous Duty Motor
 - 37 Gallon Capacity Oil Tank
 - 40 Micron Air Filter
 - 200 Mesh Suction Filter in Reservoir
 - Oil Level Sight Gauge with Thermometer
 - 40 GPM Regenerative Hydraulic Control Valve
 - 3/4 Full Light (1550 PSI)
 - Container Full Light (1950 PSI)
 - Hold to Operate Mode
 - Hold to Operate Extend/Auto Retract Mode
 - 2 - 8 Multicycle Modes
 - Ram Stop Extended Mode
 - Operator's Controls on 15' Flexible Conduit
 - Claw Type Grab Hooks
 - Replaceable Nylon Ram Guides
 - 2 Year Limited Warranty

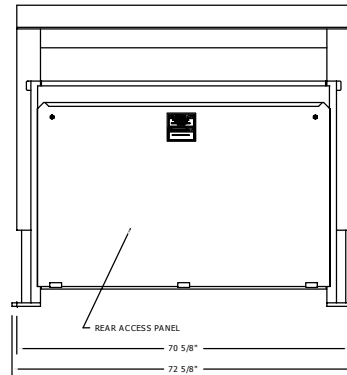
- OPTIONAL FEATURES**
- Electro-Mechanical Power Plant
 - Weather cover for Power Plant
 - Pressure Gauge
 - 500 Watt Oil Heater
 - Photoelectric Eye
 - Low Oil/High Temperature Shut Off Sensor
 - Interlock Switch On 30' Flexible Conduit
 - Hauler's Controls on 15' Flexible Conduit
 - Hoppers
 - Drive-On Deck
 - Chutes
 - 20 HP With 16 GPM Power Plant
 - Finish Paint Any Standard Galbreath Color



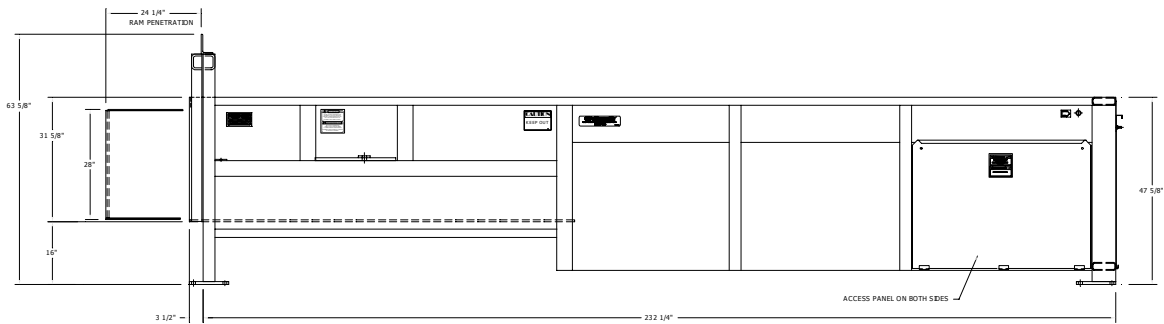
MODEL GP450HDT STATIONARY COMPACTOR



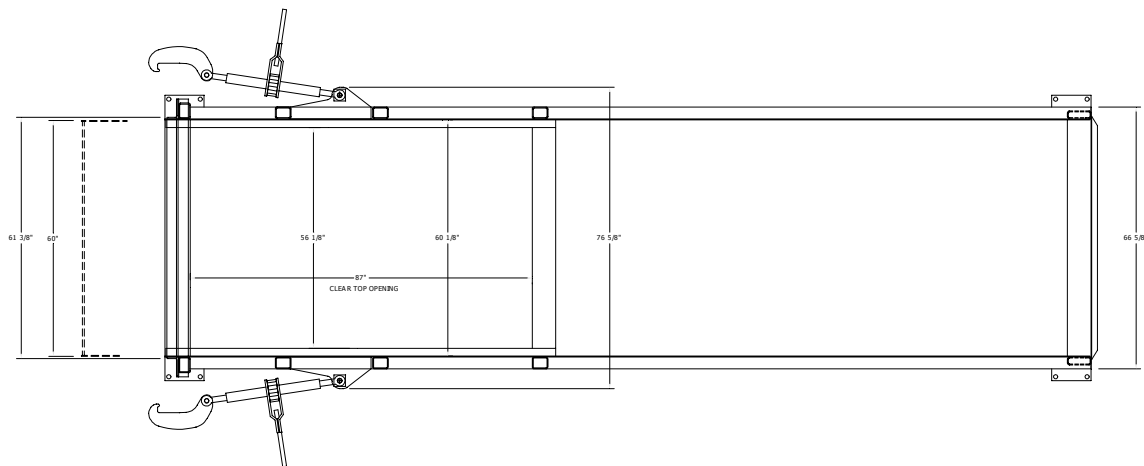
FRONT



REAR



SIDE



TOP