



Specifications

GP450 4 Cu. Yd. Stationary Compactor

GALBREATH INCORPORATED
Corporate Headquarters
461 E. Rosser Drive, P.O. Box 220
Winamac, IN 46996
Ph: 219-946-6631 Fax: 219-946-4579
800-285-0666 (Inside USA)

<http://www.galbreath-inc.com>

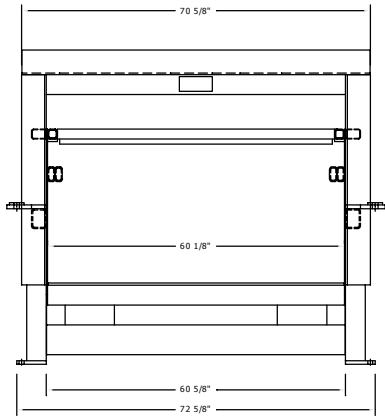
Mansfield, Texas
Ph: 817-477-4574
Fax: 817-473-7657
800-297-0668 (Inside USA)

Ider, Alabama
Ph: 256-657-6140
Fax: 256-657-6147
800-964-6478 (Inside USA)

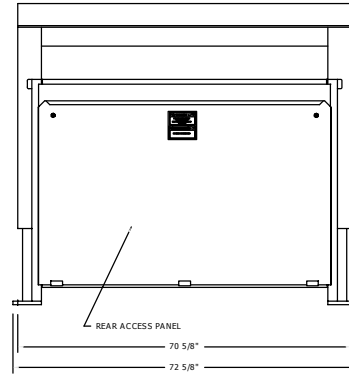
MODEL NUMBER		GP450
WASTECC Rating Size		3.26 cu. yd.
Clear Top Opening -	Length	87"
	Width	56"
Ram Penetration		24"
Chamber Length		80-1/2"
Ram Face -	Height	28"
	Width	60"
Cylinder Stroke		116"
Cylinder Bore		6"
Cylinder Rod Diameter		4-1/2"
Discharge Opening -	Height	42-1/2"
	Width	61-1/2"
Ground Height		16"
Scale Weight	Approx.	7,300 lbs.
Cycle Time		65.5 sec.
Pump Size		13 GPM
Motor Size		15 HP
Operating Pressure -	Normal	1950 PSI
	Maximum	2250 PSI
Force Rating -	Normal	32.8/55,100
	Maximum	37.9/63,600
Chamber Sides		1/4" Plate
Chamber Floor		1/2" AR Plate
Ram Top		1/4" Plate
Ram Sides		1/4" Plate
Ram Floor		1/4" Plate
Ram Face		1/2" Plate
Top Cover	Smooth Plate	12 Ga.
Volume Displacement Rate		179 cu. yd. per hr.

STANDARD FEATURES
<ul style="list-style-type: none"> • Solid State Control System • External Power Plant • UL & Canadian UL Listed Industrial Control Panel • 15 HP, 208/230/460 Volt, 3 Phase Continuous Duty Motor • 37 Gallon Capacity Oil Tank • 40 Micron Air Filter • 200 Mesh Suction Filter in Reservoir • Oil Level Sight Gauge with Thermometer • 40 GPM Regenerative Hydraulic Control Valve • 3/4 Full Light (1550 PSI) • Container Full Light (1950 PSI) • Hold to Operate Mode • Hold to Operate Extend/Auto Retract Mode • 2 - 8 Multicycle Modes • Ram Stop Extended Mode • Operator's Controls on 15' Flexible Conduit • Claw Type Grab Hooks • Replaceable Nylon Ram Guides • 2 Year Limited Warranty

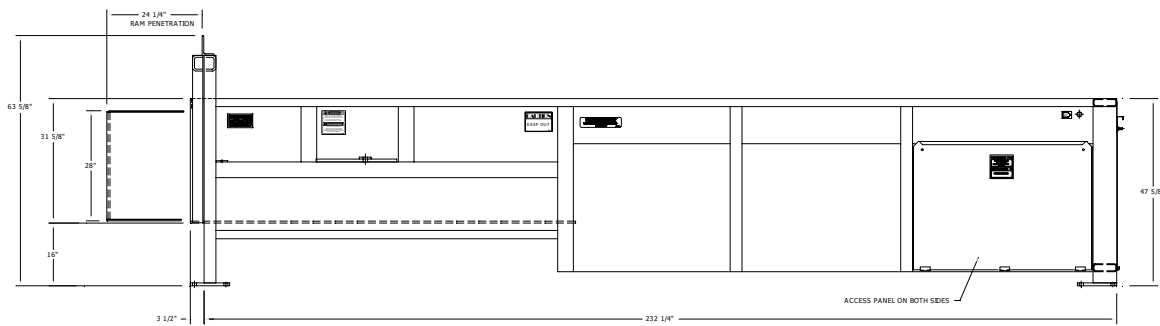
OPTIONAL FEATURES
<ul style="list-style-type: none"> • Internal Power Plant • Electro-Mechanical Power Plant • Weather cover for Power Plant • Pressure Gauge • 500 Watt Oil Heater • Photoelectric Eye • Low Oil/High Temperature Shut Off Sensor • Interlock Switch On 30' Flexible Conduit • Hauler's Controls on 15' Flexible Conduit • Hoppers • Drive-On Deck • Chutes • 20 HP With 16 GPM Power Plant • Finish Paint Any Standard Galbreath Color



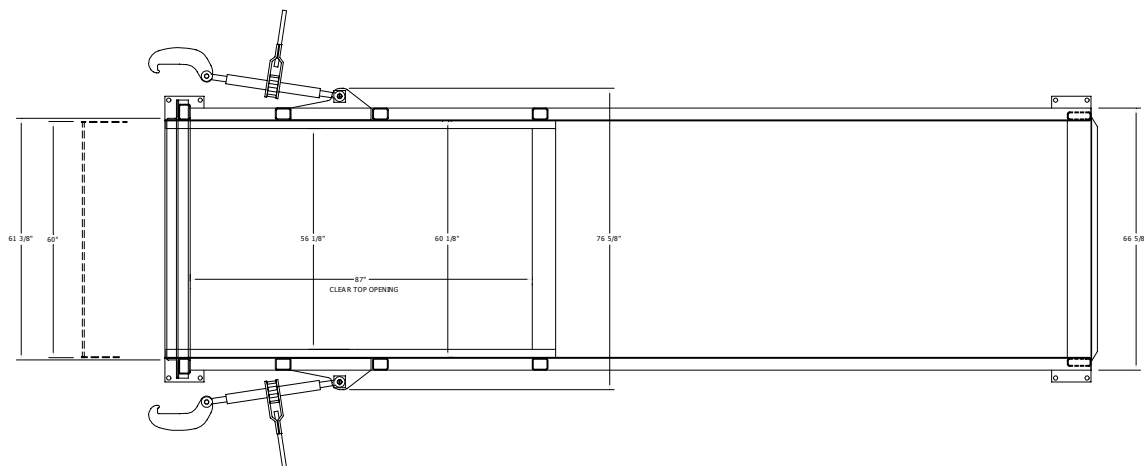
FRONT



REAR



SIDE



TOP